



# NordicEM24

## 24-bit EM Receiver



Visit [www.gdd.ca](http://www.gdd.ca)



**Looking for a portable, user friendly EM Receiver working at -40° C?** The rugged and reliable **NordicEM24**, developed by Instrumentation GDD, has been successfully field tested by experienced geophysicists in different geological and meteorological conditions. Especially designed to be efficient in cold weather and for a wide range of applications.

SPECIFICATIONS	NordicEM24
WEIGHT NordicEM24 only / + Shipping Box	<b>10 kg / 20.4 kg</b>
DIMENSION NordicEM24 only NordicEM24 + Shipping box	42 x 33 x 17 cm 60 x 24 x 41 cm
COMPATIBILITY	Surface: Any Coils, Fluxgate sensors and SQUIDS Borehole: BH43-3D and BH43-M <b>* We can adapt to your sensor</b>

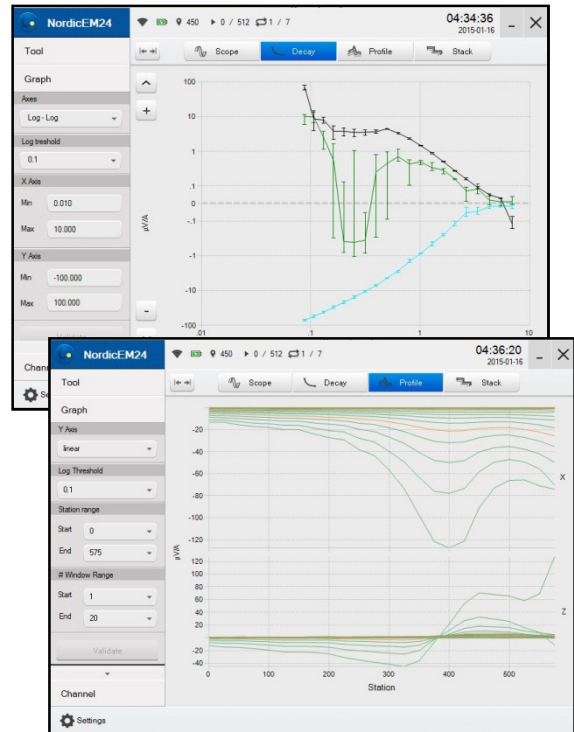
**Canadian Manufacturer of Geophysical Instrumentation since 1976**

## Features

- Full waveform recording with **24-bit ADCs**;
- 3 channels / **option up to 8 input channels (on request)**, each with ADC and amplifier;
- Detachable touch screen with virtual keyboard;
- Download data via USB;
- **User friendly software** for field operators;
- Display scope, stacked data, profiles and decays;
- **Post-processing data software**: to view, validate and correct measured data;
- Standard ASCII data file formats: AMIRA format; compatible with Maxwell® software;
- **Tested with a wide range of sensors**;
- Applications: mining exploration, groundwater exploration, environmental investigations and other related fields.

## Specifications:

- Input Level: +/-3.28V;
- Gain selection: 1, 2, 4, 8;
- Bandwidth: up to 60kHz;
- **Sampling rate: 120kHz per channel**;
- Operating system: windows Embedded Standard 7;
- Time windows: various standard windowing or user defined;
- Input impedance: 2 M $\Omega$ ;
- Display: 10.4" SVGA Resolution (800x600) with heater;
- Data storage: 64GB SSD;
- Battery: Four Lithium-Ion batteries;
- Battery life: 11 hrs of operation at 20° C and 7.5 hrs of operation at -25° C (for 3 active channels).



## PURCHASE

Can be shipped anywhere in the world.

## RENTAL

Starts on the day the instrument leaves our office in Québec to the day of its return to our office. 50% of the rental fee of the last 4 months of rental can be credited towards the purchase of the rented instrument.

## WARRANTY

All instruments are covered by one-year warranty. All repair under warranty will be done free of charge at our office in Quebec, Canada. Transportation, taxes and duties are extra, if applicable.

## SERVICE

If an instrument manufactured by GDD breaks down while under warranty or service contract, it will be replaced free of charge during repairs (upon request and subject to instrument availability).

## OTHER COSTS

Shipping, insurances, customs and taxes are extra if applicable.

## PAYMENT

Checks, credit cards, money transfer, etc.



860 boul. de la Chaudière, suite 200  
Québec (Québec), Canada G1X 4B7  
Tel. : +1(418)877-4249  
Fax: +1(418)877-4054  
Toll Free: +1-877-977-4249 (Canada)  
Web: [www.gdd.ca](http://www.gdd.ca)  
Email: [gdd@gdd.ca](mailto:gdd@gdd.ca)

Specifications subject to change without notice  
Printed in Québec, Canada, 2017